

# i<sup>3</sup>Investigator 3

Step-by-step process to help the investigator to unearth the true root causes of an incident

## WHAT IS INVESTIGATOR 3?

Investigator 3 is a powerful incident investigation and analysis software tool. It is the only tool to combine the three best practice incident investigation and analysis methods; the Kelvin TOP-SET incident investigation methodology, the Tripod Beta incident analysis methodology and the Root Cause Analysis method. Investigator 3 guides users through each stage of the investigation process, from writing the initial incident statement right through to the production of a standardised report. Investigator 3 truly is the ultimate tool for the efficient and effective investigation of high potential, complex incidents.

### TOP-SET® Investigation: *Prevention by Investigation*

- Investigator 3 follows the renowned TOP-SET Incident Investigation methodology to plan, structure and manage the entire incident investigation process. The TOP-SET method is straightforward and easy to use and produces high quality consistent results.
- By utilising the TOP-SET indicators -Technology, Organisation, People, Similar Events and Time - Investigator 3 uses a structured process to ensure 'nothing is missed' and that the information gathered is relevant and of a sufficient quality to allow an effective incident analysis using either Root Cause or Tripod Beta analysis.

### Root Cause Analysis: *Getting to the real root causes*

- Root Cause Analysis is a simple and straightforward incident analysis technique, which provides a lot of freedom in explaining the causality in the incident: what caused what?
- By identifying the 'Immediate Cause(s) and subsequent 'Underlying Cause(s) of an incident, the Root Causes can then be established.

### Tripod Analysis: *Solving Human Error*

- When improving or even removing the imperfect working environment of organizations, the number of human errors will be decreased radically. This is the basis of the Tripod method.
- By analysing barriers to ascertain if they were bypassed or broken the investigator can identify areas where improvements can be made to prevent recurrence of incidents.

## INNOVATIVE FEATURES

### Multi-Method Approach

Investigator 3 fully supports the best proven methods in Incident Investigation and Analysis techniques. It combines the simplicity of TOP-SET with the power of Root Cause Analysis and Tripod Beta analysis.

### Plan and Structure Investigations

Planning is the foundation of a good investigation. Investigator 3 uses the TOP-SET process to plan and structure investigations. The step-by-step process is easy to follow and ensures that investigation data is captured and stored efficiently.

### Storyboard - "The investigation hub"

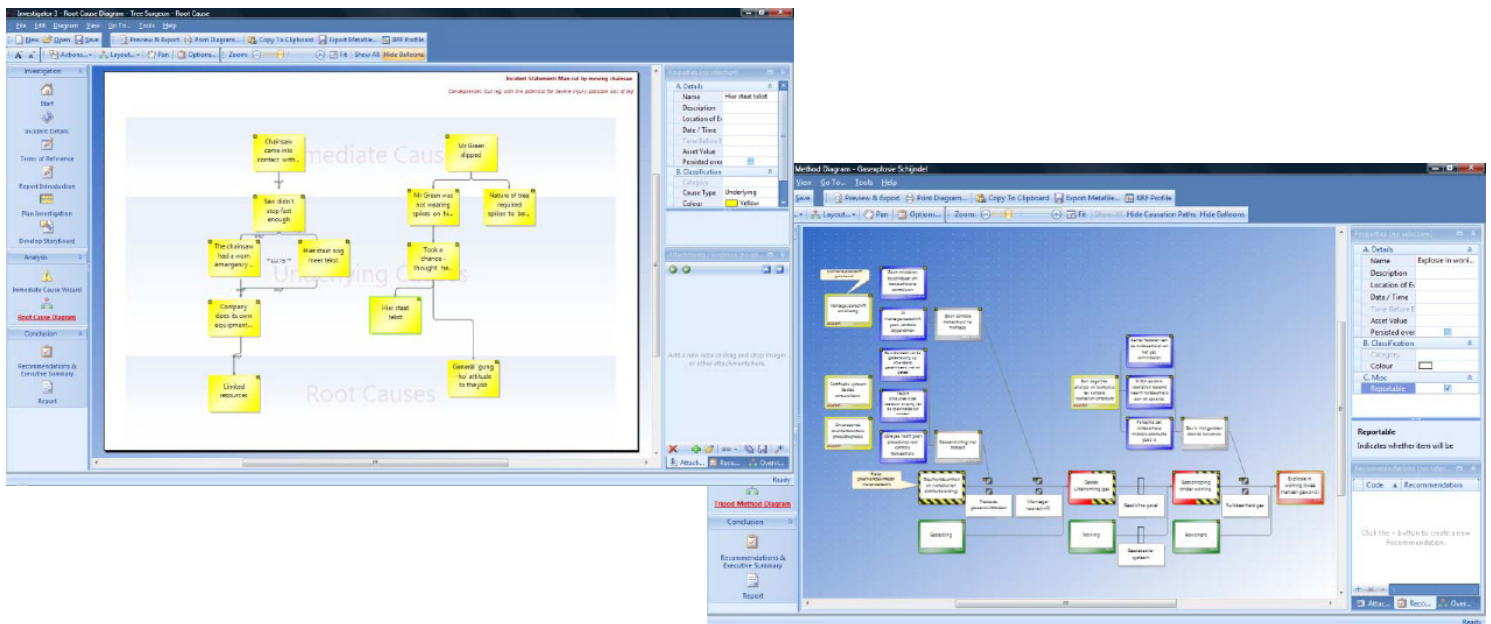
The interactive storyboard is a powerful information gathering platform. Structured under the TOP-SET indicators it allows users to create electronic "sticky notes" to capture text, images and other evidence in a highly visual and free-thinking manner which ultimately helps to build a full picture of the incident.

### Full Tripod Beta method

Investigator 3 contains a powerful implementation of the Tripod Beta incident analysis methodology. This provides the user with another layer of analysis for complex incidents.

### Customisable, consistent reports

Investigation reports are automatically created in a standardised format. Fully exportable to Microsoft Word, they also include all analysis diagrams, images, evidence and storyboard diagrams.



## The Complete Incident Investigation & Analysis Solution

- **Designed by Investigators for Investigators** – Drawing on over 25 years of incident investigation knowledge and experience, Investigator 3 has been designed with the end-user in mind. Extremely user-friendly, with a logical work flow, Investigator 3 really does take some of the stress out of incident investigation
- **Intuitive and Flexible Investigation Workflow** – Investigator 3 intuitively knows the next logical step in your investigation and analysis. It does the work so that you don't have to.
- **Flexible Investigation Structure** – Investigator 3 takes you through all the necessary steps of a full incident investigation, but also gives you the freedom to follow your own workflow.
- **Speedy Diagram Building** – With just a few mouse clicks you can create sophisticated analysis diagrams which can be exported at the touch of a button. A great time saver!
- **SMART actions and recommendations** – These can be easily created and linked to specific causes, helping to eliminate recurrence of incidents.
- **Standardised reporting** – All users, even those with limited incident investigation experience, can now produce consistent incident reports to a professional standard with the help of Investigator 3.
- **Enhanced Presentations** – Present your investigation findings clearly and concisely using Investigator 3. Effortlessly, showcase your findings in a structured step by step manner.
- **User-Friendly Design** – Consistent development and testing makes Investigator 3 an uncomplicated software tool to use, even for less experienced computer users.

## Method & Software Training

- **It is highly recommended that Investigator 3 users attend a Kelvin TOP-SET 3-Day Senior Investigator Course in order to enable them to understand and the methodology and to use the software to its full potential.**
- **Please contact us for more information about the TOP-SET courses.**
- **Please also contact us if you would like a software demonstration or to arrange a free trial of Investigator 3.**

### RPS Australia Asia Pacific BRISBANE

743 Ann Street Brisbane,  
Fortitude Valley, QLD 4006  
**Phone:** +61 7 3237 8899

### PERTH

38 Station Street, Subiaco, WA 6008  
**Phone:** +61 8 9211 111

### MALAYSIA

Unit 5a, Level 5 Manara Chan  
138 Jalan Ampang, Kuala Lumpur,  
Malaysia 50450  
**Phone:** +60 3 2732 8272

**Email:** [bowtiexp@bowtiexp.com.au](mailto:bowtiexp@bowtiexp.com.au)

### System Requirements

Windows XP/Windows Vista | Intel Pentium processor or compatible (800MHz or greater) | 512MB RAM or greater  
200MB disk space or greater | SVGA (1024x768/16 bit color or greater)